

Canonsburg Borough MS4/Stormwater Management

What is an MS4?

MS4 stands for Municipal Separate Storm Sewer Systems (MS4) which are a conveyance of separate storm structures including catch basins, storm drains and sewers, ditches, etc. that discharge into the waterways of the Commonwealth. The MS4 program is only for separate storm sewer systems and NOT sanitary or combined systems.

A municipality is considered an MS4 when there is urbanized area within the bounds of the municipal boundary determined by the US Census Bureau. The MS4 program is monitored and issued by the US Environmental Protection Agency (EPA) and the Pennsylvania Department of Environmental Protection (PADEP).

Canonsburg Borough is a municipality under the PAG-13 Municipal Separate Storm Sewer System (MS4) Permit (NPDES Permit No. PAG136103). Permittees under the MS4 permit are responsible for the pollutant load and stormwater runoff within the MS4's urbanized areas that are discharging to downstream storm sewers or waters of the Commonwealth. Under this permit, the Borough is required to address these pollutant control measures by informing the community on stormwater and how the community can assist the Borough in meeting their stormwater management requirements.

What is Illicit Discharge?

An illicit discharge is any discharge to a municipal separate storm sewer system that is NOT a stormwater ONLY discharge.

Examples of illicit discharges include dumping materials in an inlet or stream (paint, construction materials – asphalt, concrete, etc., household waste/materials – oils, gas, leaves, grass clippings, etc.). For more information on illicit discharge please view the US EPA Illicit Discharge Detection and Elimination Program Development Sheet or the Illicit Discharge flyer with Borough contact information.

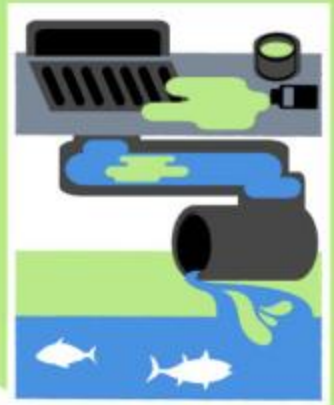
EPA Illicit Discharge Detection & Elimination Program Development

If you think you may have identified an illicit discharge, please complete the form below and submit to:

Borough of Canonsburg
68 East Pike Street, Canonsburg, PA 15317
P: 724-745-1800 | F: 724-745-8850

What is an Illicit Discharge?

An illicit discharge is a substance other than stormwater that is released to a storm drain, swale, storm sewer, or other system that moves, but does not treat, stormwater before it is directed into a stream, lake, or river.



These substances are considered "illicit", or banned, because they are hazardous to the health and safety of our water resources.

Some example sources of illicit discharges include:

- Sanitary wastewater (e.g. water from sinks, laundry, toilets, etc.)
- Effluent from septic tanks
- Spills from roadway accidents
- Improper disposal of auto and household hazardous wastes

Identifying Illicit Discharges

Illicit Discharges might enter the stormwater system through **direct connection** or **indirect connection**.

Direct connections occur when wastewater pipes are mistakenly or deliberately connected to storm sewers.

Indirect connections occur when **cracked sanitary sewers leak** into storm sewers or when **spills flow** or **pollutants are dumped** into drains or waterways.

Illicit discharges are most noticeable during dry weather. A storm drain or a stormwater pipe with an **unusual odor, suds, an oil sheen, or flowing water during dry weather** might be an illicit discharge.

Contact the Borough office at 724-745-1800 if you think you have identified an illicit discharge!

Properly Dispose of Hazardous Waste

Visit your county's website

to find information about local hazardous waste drop off programs

Learn more at www.respectourwaters.org/illicit-discharge-swwt



RESPECT OUR WATERS

Illicit Discharge Complaint Form 332.85 KB

Canonsburg Borough MS4 Documents

2018-2023 Permit 12.5 MB

[Canonsburg Borough Stormwater Ordinance 991.78 KB](#)

[2021-2022 Canonsburg Borough Annual MS4 Report 335.56 KB](#)

[2022-2023 Canonsburg Borough Annual MS4 Report 2.95 MB](#)

Educational Materials

ADDITIONAL STORMWATER EDUCATION

[Ditches and Swales, Keep Them Clean and Clear](#)

[Car Care: Tips and Best Practices](#)

[Always Pick Up Your Pet's Waste](#)

[Pollution Prevention at Work](#)

[Yard Care Tips and Best Practices](#)

[3 Tips to Cleaner Water...Leaf It Out!](#)

[Winter Landscape Care](#)

[Illicit Discharge Detection & Elimination Program Development](#)

[DEP: How to Be Stormwater Smart](#)

[PA DEP: Guidelines for Maintaining Streams in Your Community](#)

[Video: Stormwater Basics](#)

[Video: What is an MS4?](#)

[Video: EPA Managing Stormwater with Green Infrastructure](#)

[Video: Where Does Stormwater Go?](#)

ACTIVITIES (ADULTS/OLDER CHILDREN)

[Stormwater Walk and Survey](#)

[Build Your Own Rain Barrel](#)

EDUCATIONAL MATERIALS / ACTIVITIES (YOUNG CHILDREN)

[PGH Water & Sewer Authority: Videos, Games and Activities](#)

[Dwayne the Drain Story and Coloring Book](#)

[Dwayne the Drain Activity Book](#)

[Stormwater Education for Kids Activities](#)

For additional information or questions pertaining to stormwater management/Canonsburg Borough's MS4 program, please contact:

Marisa Brletic, Project Manager
KLH Engineers, Inc
mbrletic [at] klhengineers.com

Page Last Revised: 2/14/24